



LEASE RATE: \$650 PER MONTH

Property Highlights

Number Of Units: 1 Suite Available

Suite 320: 650 SF, 1 large open office suite on the 3rd floor with closet storage

Utilities: Included in lease rate

Building Size: 7,669 SF

Year Built: 1970

Nearest Highway: 5 miles from I-71 at SR-18 interchange

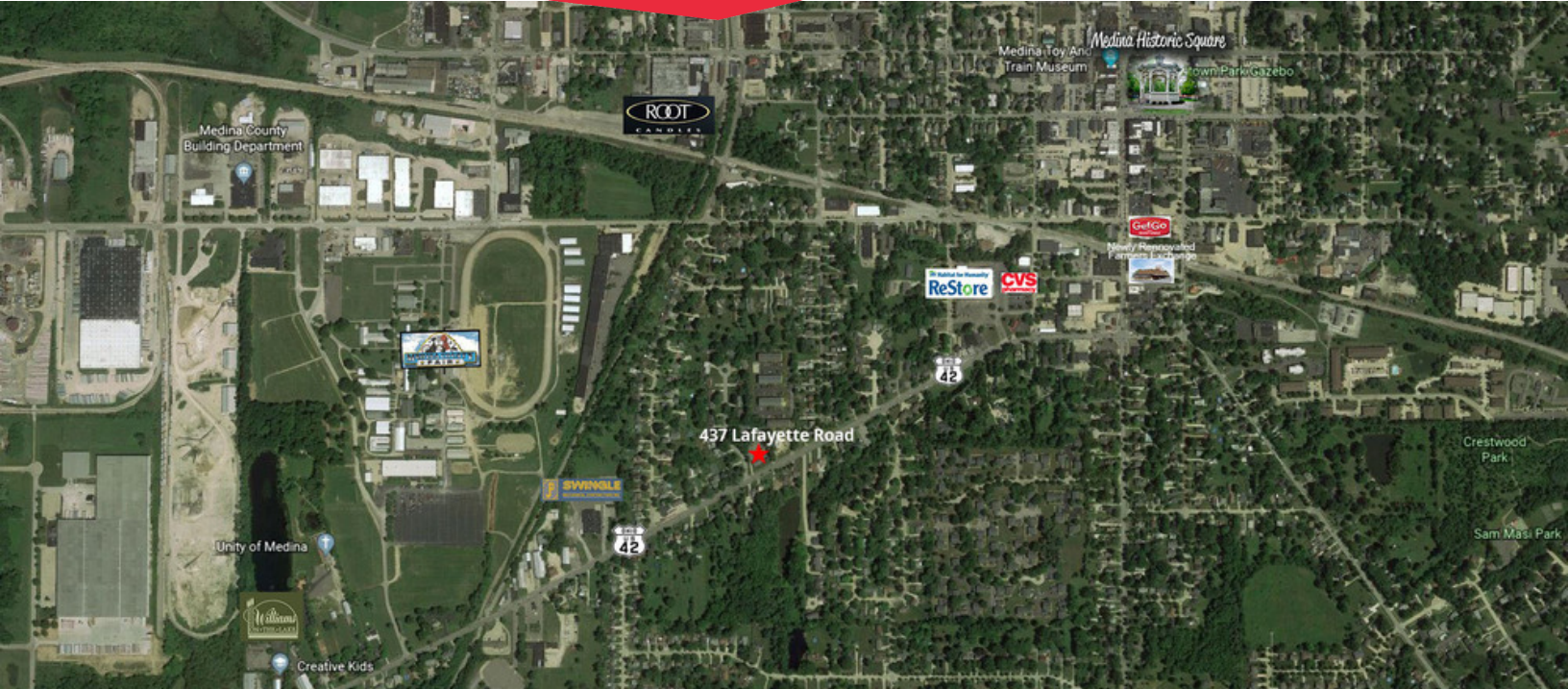


LISTING AGENT

SAM TECCA
Sam@GerspacherGroup.com

330.722.5002

GERSPACHER REAL ESTATE GROUP
5164 Normandy Park Drive, Suite 285
Medina, OH 44256



PROPERTY OVERVIEW

The Orchard Park Office Building at 437 Lafayette Road is a well maintained 7,669 SF office building with three floors, situated on .85 acres. The building, which is in a quiet, park-like setting with lots of trees, has many windows, skylights, vaulted ceilings and ample parking. There is 1 suite currently for lease.

Suite 320 is a 650 SF, one large open room office suite on the third floor with closet storage. Common, men and women restrooms on each floor maintained by landlord. Signage is available at the street and on directories posted in the rear of the building and inside each entrance.

LOCATION OVERVIEW

On US-42, just Southwest of the historic Medina Square. It is approximately five miles to the I-71/SR-18 interchange.

